



203/17 Grosvenor Street Croydon, NSW



2



2



1

## Designer 2 bedroom apartment in prime location

Situated on the second floor of the Chelsea Croydon development, this elegant and modern two bedroom + study apartment offers a contemporary apartment living and city convenience. It has a well proportioned floorplan, main bedroom is separated from the other bedroom offering privacy, and two balconies. Short stroll to train, local amenities, parks, playgrounds and respected schools.

- Open gas kitchen offers quality appliances and stone bench
- Well-proportioned open living space flows onto a covered balcony
- Generous sized main bedroom with built-ins and ensuite, access to balcony
- Large second bedroom with built-ins and its own balcony
- Modern bathrooms, Study Nook
- Timber floors in living area and carpet in bedrooms
- Internal laundry with dryer provided
- Ducted air conditioning, gas bayonet in living & balcony
- Security building with lift access, secure car space
- Steps to sought-after public and private Schools including Croydon Public and Presbyterian Ladies College

**\$900 pw**

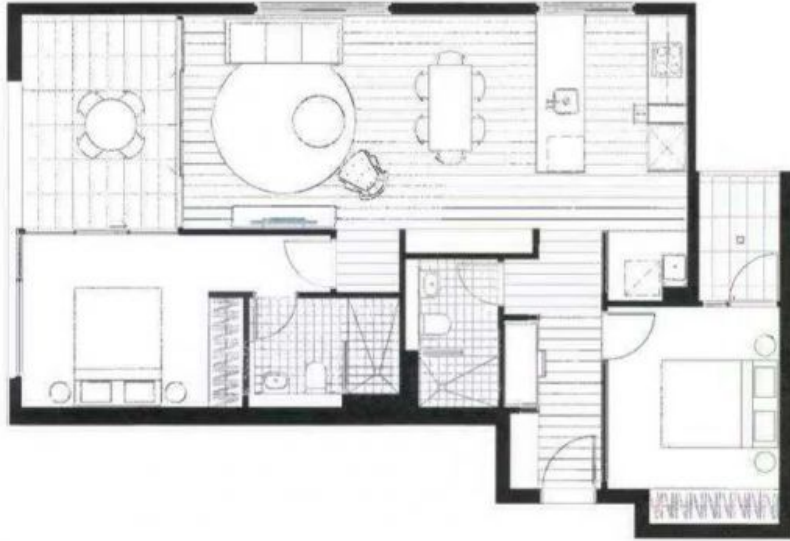
**View:** Saturday, 19th October 2024 12:20 - 12:40

**Contact:** Cyndia Sun  
0435 872 554  
Steph Watmore  
0416 556 064

**Type:** Apartment

**Date Available:** 16/10/2024

**Bond:** \$3600

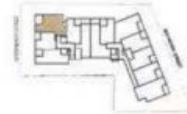


Disclaimer: The information is set out as a general guide for the purpose of identifying participants and does not constitute an offer or contract. All dimensions, drawings, references to conditions and necessary considerations for use and other details are given in good faith and are intended to be correct, but this should not be construed as a warranty or representation of fact, and shall provide no protection or reliance in the circumstances of each fact, and shall not be taken as a warranty or representation of fact or otherwise in any way.

## CHELSEA CROYDON

**APTS**  
**1.03, 2.03, 3.03, 5.03,**  
**6.03, 7.03, 8.03**  
**LEVEL 1-8**  
 2 BEDROOM + MEDIA

INTERNAL	80m <sup>2</sup>
EXTERNAL	13m <sup>2</sup>
<b>TOTAL</b>	<b>93m<sup>2</sup></b>



[chelseacroydon.com.au](http://chelseacroydon.com.au)  
 1800 662 590



**CBRE**

Plans shown are only indicative of layout. Dimensions are approximate.

**Croydon, NSW**  
**203/17 Grosvenor Street**