



1103/185 Macquarie Street Sydney, NSW



2



1



1

Exclusive Dual Level Apartment with Panoramic Harbour Views

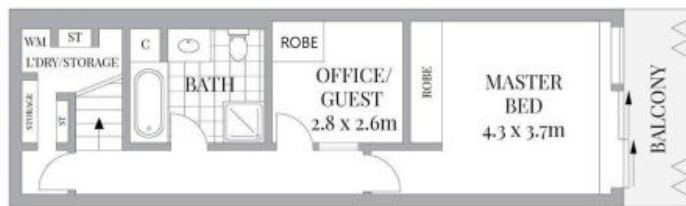
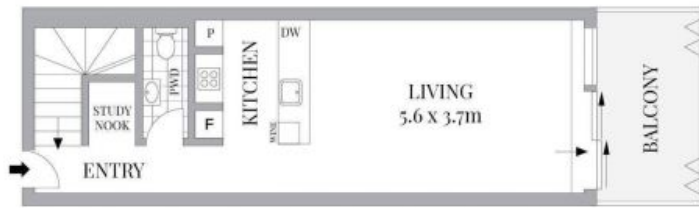
Flowing over an impressive 102sqm, this dual-level apartment offers a rare city living opportunity in prestigious Macquarie Street. With expansive views of the harbour, park, and Opera House, this house-like 'terrace in the sky' boasts immediate access to some of Sydney's most iconic landmarks and is adjacent to Martin Place, Hyde Park, and Circular Quay. The boutique, well-maintained building exudes charm, build quality, and luxury throughout.

- 180-degree panoramic views over the Opera House, harbour, and The Royal Botanic Gardens from the elevated position
- Private double glazed master bedroom with ample closet space and access to the balcony
- 2nd bedroom is ideal for guest stay, a study/home office or a media room
- Timber floors in the open plan living/dining with floor-to-ceiling glass doors flowing onto the deep entertainer's terrace
- Modern designer kitchen with premium Miele appliances, integrated fridge, wine fridge and stone countertops
- Spacious Bathroom has separate bath and

\$1,300 pw

Contact: Emily Flowers
0451 488 998
Dee Uther
0427 689 139

Type: Apartment
Date Available: 26/07/2024
Bond: \$5200



(NOT IN POSITION)



Whilst borm.com.au has made every attempt to ensure the accuracy of the floor plan contained here, measurements are approximate and no responsibility is taken for any error, omission, or mis-statement. This plan is for illustrative purposes only.

1103/185 Macquarie Street, Sydney

Plans shown are only indicative of layout. Dimensions are approximate.

Sydney, NSW
1103/185 Macquarie Street